

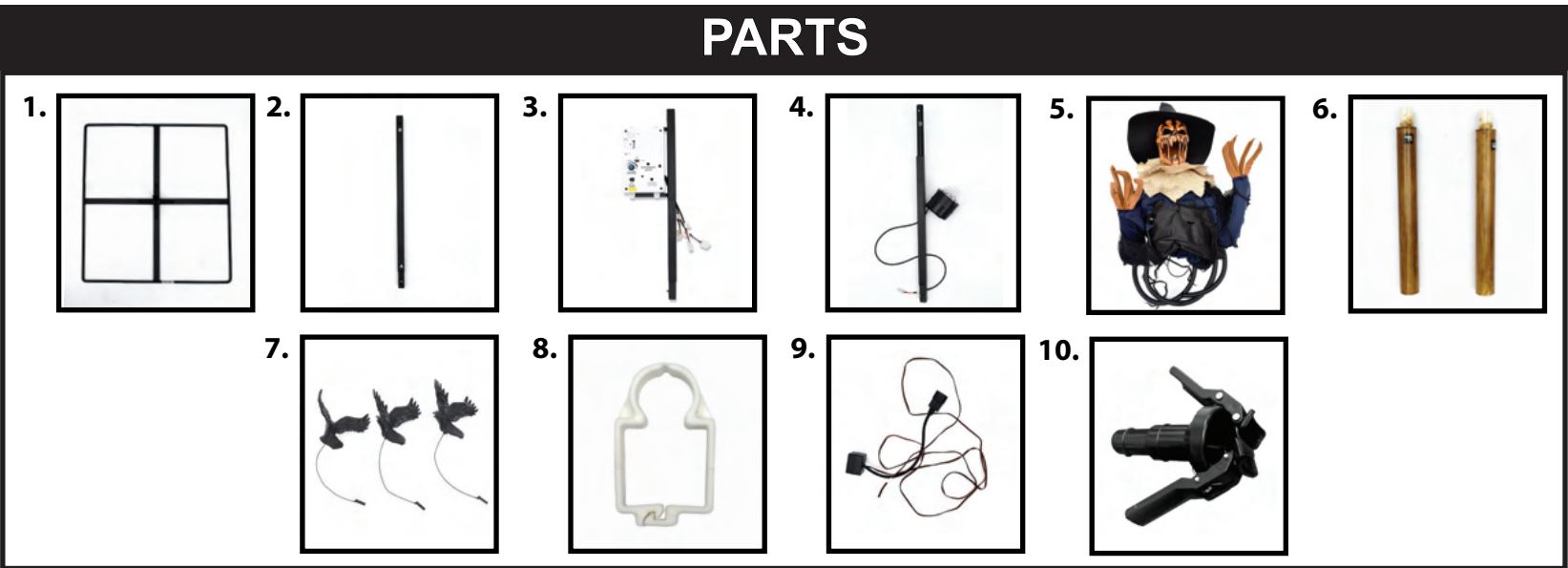
# 7—FT ANIMATED FOGGING RAVEN SCARECROW™

## INSTALLATION AND OPERATING INSTRUCTIONS

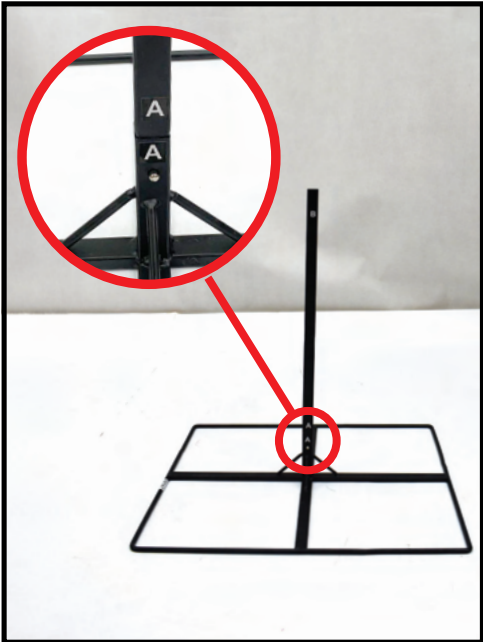
KEEP ALL PLASTIC AND WIRE PARTS AWAY FROM CHILDREN  
WARNING: DO NOT TURN ON THE PROP UNTIL FULLY ASSEMBLED. STAY CLEAR OF THE PROP WHILE OPERATING. ESTIMATED ASSEMBLY TIME TEN MINUTES.

### PARTS

- 1. METAL BASE
- 2. LOWER POLE
- 3. MIDDLE POLE & CONTROL BOX
- 4. UPPER POLE & LIGHT
- 5. HEAD, BODY & FOG HOSE
- 6. RIGHT & LEFT POLE
- 7. THREE RAVENS
- 8. WIRE MANAGEMENT CLIP
- 9. FOG CORD & FOG ADAPTER
- 10. FOG CLAMP

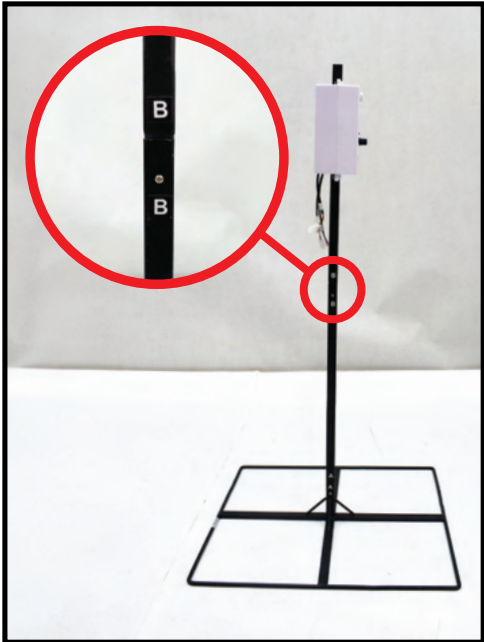


### ASSEMBLY



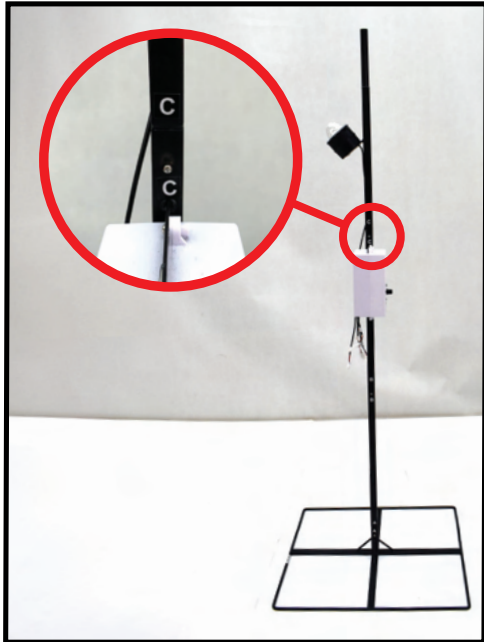
1. Insert and snap lock the LOWER POLE to the METAL BASE.

MATCH A TO A



2. Insert and snap lock the MIDDLE POLE & CONTROL BOX to the LOWER POLE.

MATCH B TO B



3. Insert and snap lock the UPPER POLE & LIGHT to the MIDDLE POLE & CONTROL BOX.

MATCH C TO C



4. Insert and snap lock the HEAD, BODY & FOG HOSE to the UPPER POLE & LIGHT.

MATCH D TO D



5. Connect the LEFT POLE to the HEAD & BODY.

MATCH E TO E



6. Connect the RIGHT POLE to the HEAD & BODY.

MATCH F TO F



7. Insert and snap lock the THREE RAVENS to the neck plate on the HEAD, BODY & FOG HOSE.

MATCH G TO G (x3)



8. Attach the wires to the CONTROL BOX.

MATCH H TO H - Head LEDs  
MATCH I TO I - Human Sensor (located on chest)  
MATCH J TO J - Chest LEDs

# ASSEMBLY



9. Attach the WIRE MANAGMENT CLIP to the UPPER POLE & LIGHT.



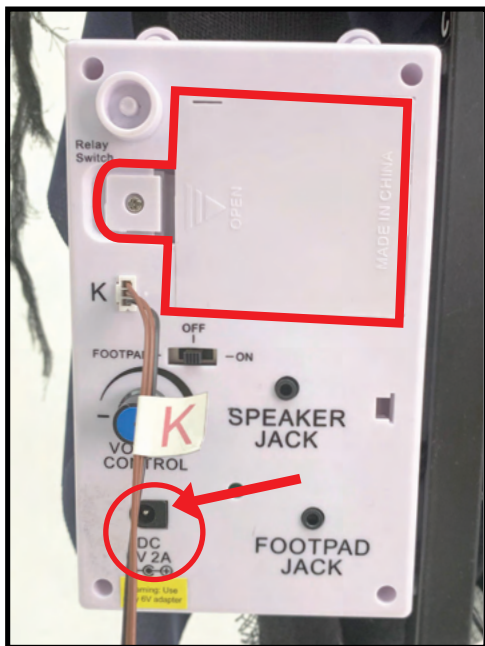
10. Untie FOG HOSE. Run FOG HOSE under clothing. Plug the FOG CORD into the CONTROL BOX.

MATCH K TO K

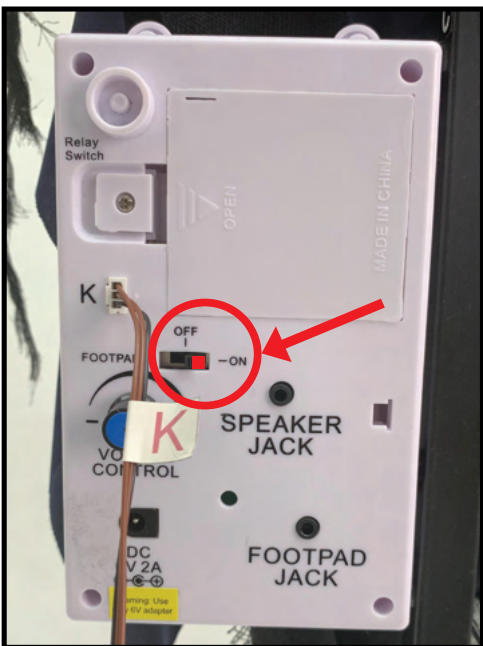


11. Adjust appearance by lowering costume over CONTROL BOX.

# OPERATING INSTRUCTIONS



Plug in the 6V 2A ADAPTER (not included) or insert 4 AA BATTERIES (not included) into the battery compartment located on the CONTROL BOX.



Move the switch to the ON position. Move in front of the item or make a loud sound (clap) to activate the item. Turn the item to the OFF position when not in use. PROCEED TO FOG MACHINE SETUP.



## ! FOG MACHINE INFORMATION

Please follow steps 1 through 11 on the assembly instructions before beginning assembly:

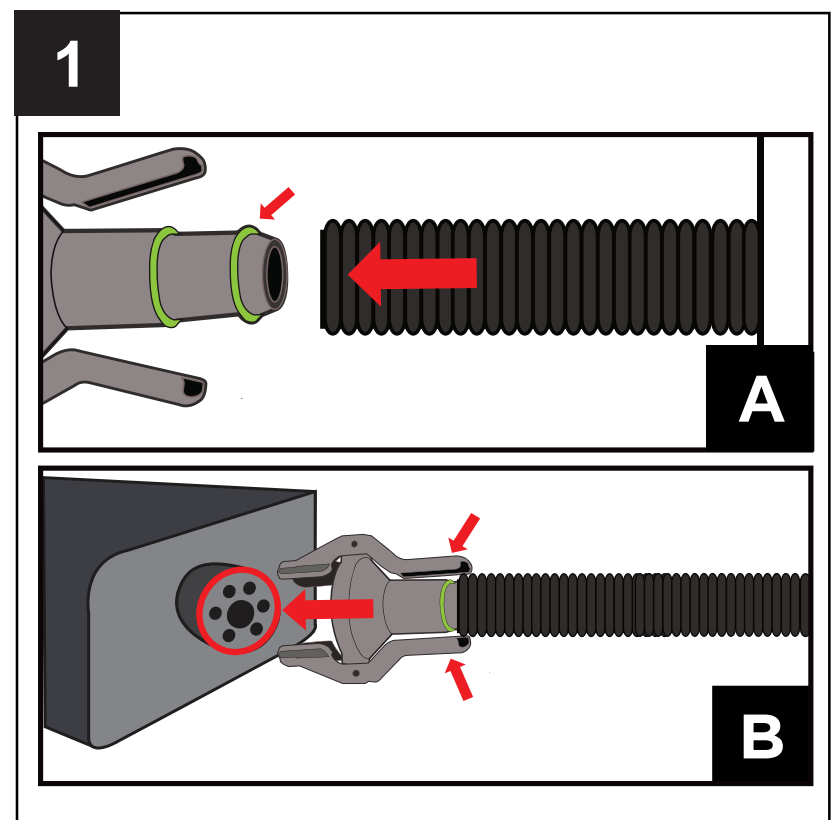
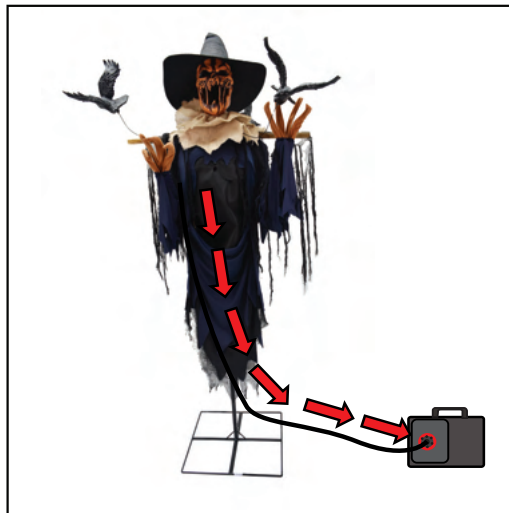
1. Your fog machine (400 or 1000 watt) can be used in conjunction with 7-FT ANIMATED FOGGING RAVEN SCARECROW™.
2. Do not use with any other fog machine.
3. FOG MACHINE IS NOT INCLUDED. MUST BE PURCHASED SEPARATELY.
4. Manufacturer does not guarantee the performance of the fog machine.
5. Make sure to use the supplied fog machine components when hooking up to the fog machine, or damage could occur.
6. MAKE SURE THE 7-FT ANIMATED FOGGING RAVEN SCARECROW™ IS SET TO THE "OFF" POSITION AND YOUR FOG MACHINE IS TURNED OFF WHEN NOT IN USE.

Fog Clamp - PATENT <https://tekkydesign.com/pages/terms-conditions.php>

## FOG MACHINE ASSEMBLY INSTRUCTIONS:

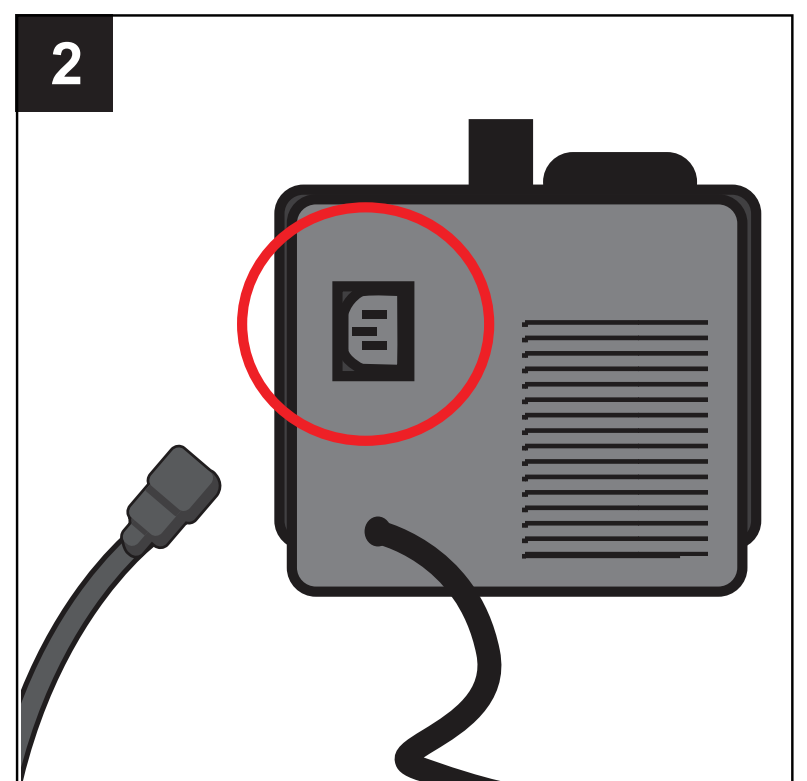
1. Fog hose will click and secure in place.  
(See Illustration A)

Depress the lever arms of the FOG CLAMP and attach to the fog machine nozzle.  
(See Illustration B)



2. Plug the FOG CORD & FOG ADAPTER into your fog machine. If the FOG CORD does not fit, see illustration 2a.

- 2a. Plug the FOG CORD into the FOG ADAPTER. Plug FOG ADAPTER into your fog machine.



### OPTIONAL FOOTPAD SET UP

FOOTPAD MUST BE PURCHASED SEPARATELY.

1. Insert the cable from optional footpad into the jack labeled FOOTPAD JACK on the CONTROL BOX.
2. Place the switch in the FOOTPAD position to enable FOOTPAD activation.
3. Step on the FOOTPAD to activate the scary sequence!

\*Footpads are sold separately and can be purchased at [www.tekkyaccessories.com](http://www.tekkyaccessories.com)



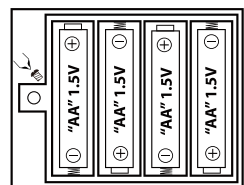
### OPTIONAL EXTERNAL SPEAKER SET UP

EXTERNAL SPEAKER IS NOT INCLUDED. MUST BE PURCHASED SEPARATELY.

1. Plug speaker cord into the jack labeled SPEAKER JACK located on the CONTROL BOX.
2. Use volume knob on external speaker to control volume levels



#### Battery Diagram



#### BATTERY INSTRUCTIONS AND CAUTIONS

Battery installation and removal should be performed by an adult. Remove batteries when not in use. Use only batteries recommended in the instructions. Do not mix new and used batteries. Do not mix alkaline, carbon-zinc, nickel-cadmium, rechargeable or different types of batteries. Be mindful to insert batteries with the correct polarity (+/-) as indicated. Remove all exhausted batteries. Rechargeable batteries are only to be charged under adult supervision. Rechargeable batteries are to be removed from the item before being charged. Non-rechargeable batteries are not to be recharged. The supply terminals are not to be short-circuited. Always dispose of exhausted batteries properly. Do NOT dispose of batteries in fire, they may leak or explode.

**Warning! This item is not a toy. For decoration only. Small parts, choking hazard. This product is intended for use by persons 15 years of age and older. Not intended for use by children ages 14 years and younger.**

#### WARNING

**DO NOT TURN ITEM ON UNTIL YOU HAVE COMPLETELY FINISHED ASSEMBLY.  
STAY CLEAR OF ITEM WHILE OPERATING.  
DO NOT PLACE ITEM ON UNEVEN GROUND.  
DO NOT PLACE WEIGHT ON ITEM WHILE IN OPERATION.**



visit us at [tekkydesign.com](http://tekkydesign.com)

Requires 6V 2A ADAPTER (not included)  
or 4AA batteries (not included)

ALL NEW MATERIALS:  
METAL PLASTIC, FABRIC  
Surface washable only.

7-FT ANIMATED FOGGING RAVEN  
SCARECROW™

is a trademark of Tekky.  
PATENT: [https://tekkydesign.com/  
pages/terms-conditions.php](https://tekkydesign.com/pages/terms-conditions.php)

Copyright © 2024 Tekky.

All Rights Reserved.

MADE IN CHINA



**DO NOT RETURN THIS ITEM TO THE STORE!**  
If experiencing technical difficulties, please go  
to [www.tekkydesign.com](http://www.tekkydesign.com) for assistance.



#### SMART PHONE SCAN SETUP VIDEO

